

# Traumatic Brain Injury

## INFOGRAPHIC

### What is a Traumatic Brain Injury (TBI)?

Any **INJURY** that involves external force **DAMAGING THE BRAIN.**



There are **TWO TYPES OF TBI:**

#### Closed Head Injury



Impact or sudden movement of the head.

#### Penetrating Head Injury



An object physically entering the brain.

### What are the Causes of Traumatic Brain Injury?



Some **SERIOUS BRAIN INJURIES** are the result of **SECOND IMPACT SYNDROME.**

A **RARE BUT DEADLY CONDITION** when someone suffers a **SECOND CONCUSSION** before the first one has fully healed.



### SYMPTOMS INCLUDE:



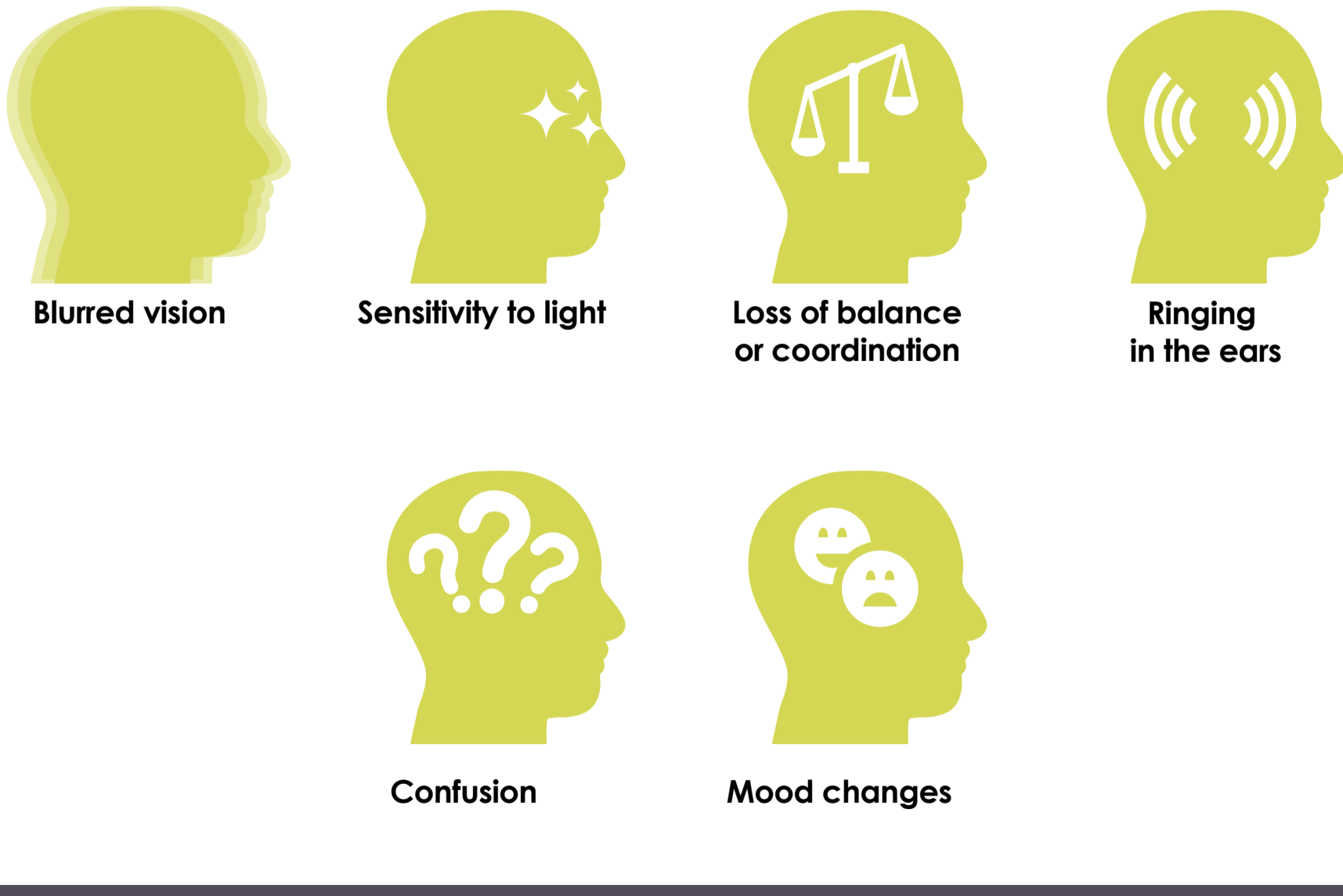
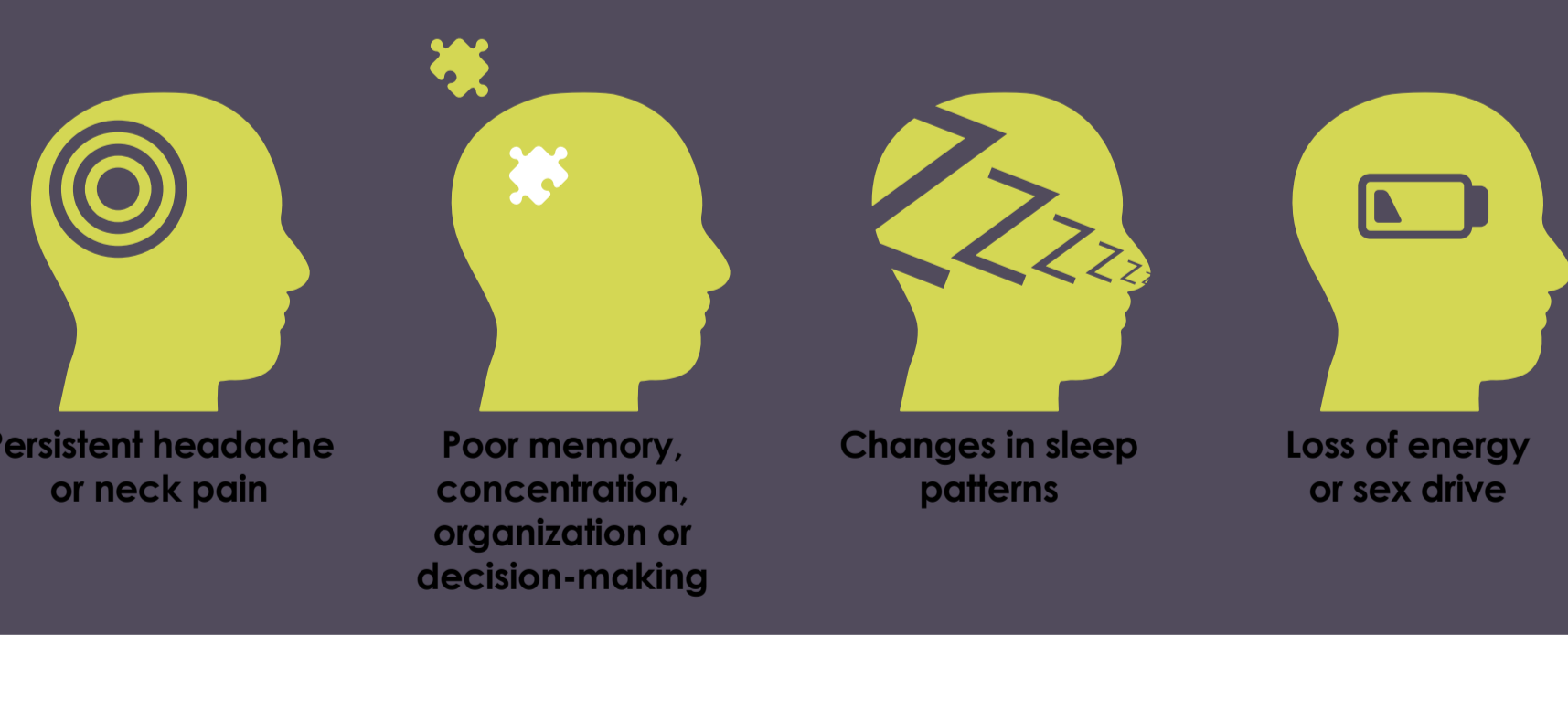
SEVERE SWELLING



HERNIATION OF THE BRAIN

Many people with TBI don't know they have been injured!

### WATCH OUT FOR THESE WARNING SIGNS:



**BRAIN INJURY OFTEN REQUIRES LONG-TERM CARE AND SIGNIFICANT LIFESTYLE CHANGES.**

If you or a loved one may have a brain injury, you need an accomplished attorney's help to pay for those long-term costs.

**CONTACT US TODAY**

**206.623.7520**